

SPEC SHEET + MEASUREMENTS

PORT AUTHORITY.

Port Authority® Long Sleeve UV Daybreak Shirt. W960

Product photo



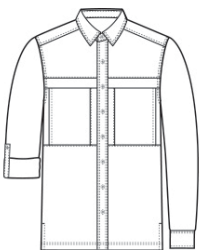
Sun and moisture are no problem for this versatile, lightweight, highly breathable shirt. Relaxed styling makes it perfect for outdoor or indoor wear.

- 2.2-ounce, 100% polyester poplin
- 2.5-ounce, 100% polyester poplin (White)
- Moisture-wicking
- UPF rating of 30
- Hidden button-down collar
- Dyed-to-match buttons
- Two chest pockets with concealment flaps and hook and loop closures
- Vented back panel with mesh ventilation
- Rounded adjustable cuffs
- Roll sleeves with button tabs
- Straight hem with side vents

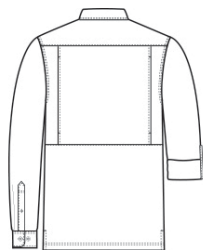
CARE INSTRUCTIONS

Fabric & Mesh Trim: 100% Polyester. Fasten Closures. Hook & Loop Before Washing. Do Not Wring. Machine Wash Cold Gentle Cycle With Like Colors. Only Non-Chlorine Bleach If Needed. Fabric Softener Not Recommended. Tumble Dry Low. Remove Promptly.

Sketches



front



back

SPEC SHEET + MEASUREMENTS

PORT AUTHORITY.

Port Authority® Long Sleeve UV Daybreak Shirt. W960

PRODUCT MEASUREMENTS

	XS	S	M	L	XL	2XL	3XL	4XL
Body Length at Back	29	30	31	32	33	34	34 1/2	35
Chest	20	21 1/2	23	24 1/2	26	27 1/2	29 1/2	31 1/2
Sleeve Length from Center Back	33 3/4	34 1/2	35 1/4	36	36 3/4	37 1/2	38 1/4	39
Pocket Height	8 1/4	8 1/4	8 1/2	8 1/2	8 1/2	8 1/2	8 1/2	8 3/4
Pocket Width	6 3/8	6 3/8	6 5/8	6 5/8	6 5/8	6 5/8	6 5/8	6 7/8

Body Length at Back: Measured from high point shoulder to finished hem at back.

Chest: Measured across the chest one inch below armhole when laid flat.

Sleeve Length from Center Back: Measure from Center Back neck to shoulder point to sleeve hem.

Pocket Height: Measure from top to bottom at center.

Pocket Width: Measure from side to side at top edge.

SPEC SHEET + MEASUREMENTS

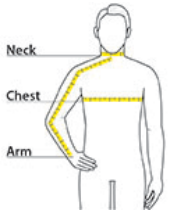
PORT AUTHORITY.

Port Authority® Long Sleeve UV Daybreak Shirt. W960

SIZE CHARTS

	XS	S	M	L	XL	2XL	3XL	4XL
Chest	32-34	35-37	38-40	41-43	44-46	47-49	50-53	54-57
Neck	14 1/2 - 15	15 - 15 1/2	15 1/2 - 16	16 - 16 1/2	16 1/2 - 17	17 - 17 1/2	17 1/2 - 18	18 - 18 1/2
Arm	30 1/2	32	34	35	36 1/2	37 1/2	38 1/2	39 1/2

HOW TO MEASURE



Neck Measure around the fullest part of the neck at the base.
Chest Width Measure under the arm and around the fullest part of the chest with arms down, keeping tape horizontal. **Arm** Place hand on hip. Start at the center of the back of the neck and measure across the shoulder, to the elbow, and then down to the wrist.

COLORS



Bright Seafoam
PMS 564C



Deep Black
PMS BLACK C



Gusty Grey
PMS COOL GREY 8C



Light Blue
PMS 644C



Oat



True Navy
PMS 533C



White



Yellow
PMS 600C